

# A Pseudoscorpion from Poplar Trees

MARGARET LYONS MOLES

## *Chelanops paludis* n. sp.

*Measurements*—Length of animal, including mandibles, 3 mm. Length of palps 3.5 mm. Length of claws 1.5 mm. Width of largest part of abdomen 2.5 mm. The whole animal is nearly as broad as it is long.

*Color*—Cephalothorax dark reddish brown. Palps reddish brown. Legs pale yellowish brown. Abdomen pale yellowish brown with reddish brown spots.

*Cephalothorax*—Slightly longer than it is broad. Front margin evenly rounded, sides convex and lower margin of a broad “V” shape. One distinct suture whose outer edges curve toward the front margin.

*Abdomen*—Nearly as broad as it is long, divided into parallel distinct sutures. The scuta are distinct at the center of the abdomen but towards the edge of the body grow indistinct. This is due to the fatness of the abdomen. Each plate has two dark spots of color which are fringed on the sides and bottom edge with ten stout clavate hairs.

The whole body is finely granulate and covered with stout clavate hairs. These so-called “clavate hairs” have not the true knob, but are fringed at the end.

*Pedipalps*—Length 3.5 mm. Longer than the whole animal. Coxa smooth, trochanter as usual. Femur shorter than cephalothorax, pedicellate, broadest near the base, concave on inner margin near the tip. Tibia shorter than femur, strongly convex on outer edge, strongly convex on inner side near base and beyond strongly concave, pedicellate. The trochanter, femur and tibia are finely granulate and covered with short clavate hairs.

*Claws*—Short and stout, as long as cephalothorax, fingers stout and not strongly curved. Hand evenly and strongly convex on inner side, not so strongly convex on outer side, yet

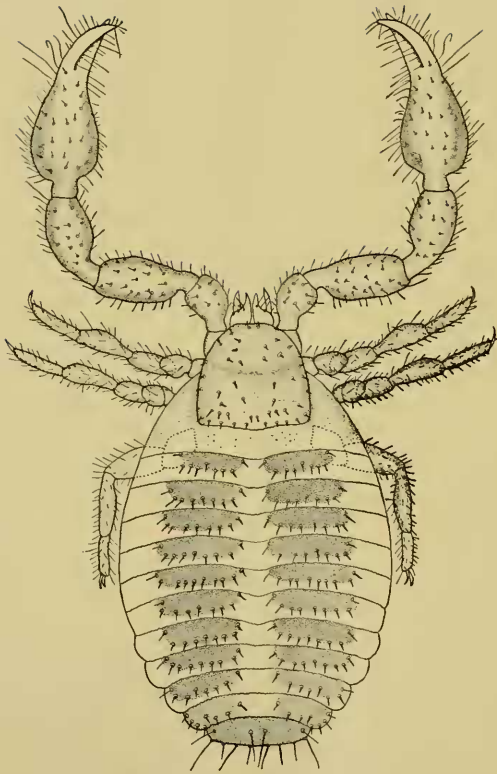


Figure 1. *Chelatanops paludis* n. sp. Last pair of legs not shown.

evenly convex. Hand slightly granular and covered sparsely with short clavate hairs. The fingers are smooth with many long simple tactile hairs.

*Mandibles*—Small for size of animals, the fixed finger provided with many teeth. Serulla attached throughout length of moveable finger. Spinnerets short and knob-like. Mandibles have six long simple hairs.

*Legs*—Each with a trochanter, claws double with a membrane between the claws. Legs covered with short clavate hairs.

*Eyes*—None.

*Habitat*—On poplar trees in Chino Swamp. Found in rotten poplar log and live poplar trees.

*(Contribution from the Zoological Laboratory of Pomona College.)*